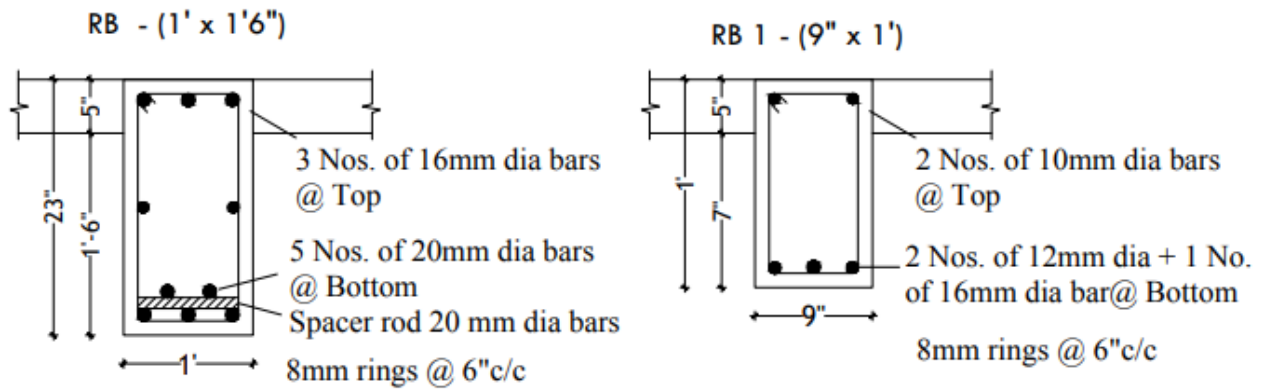
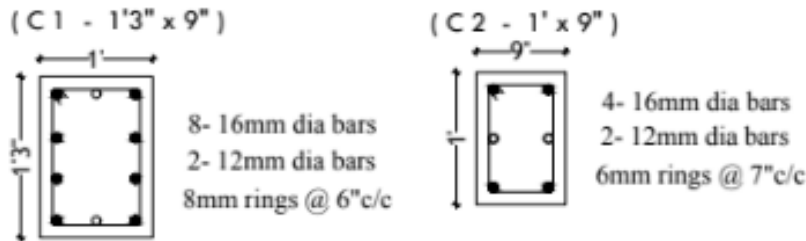


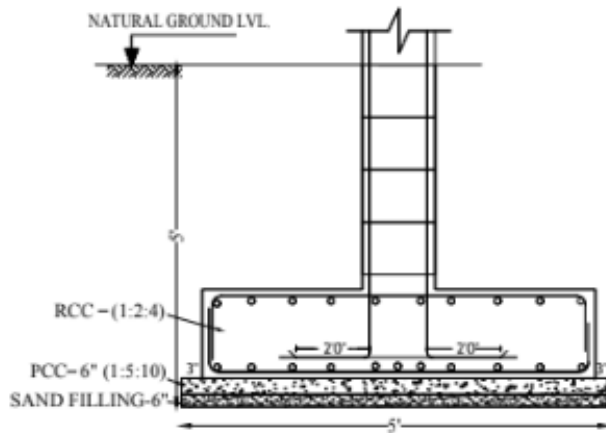
ROOF BEAM SECTIONS



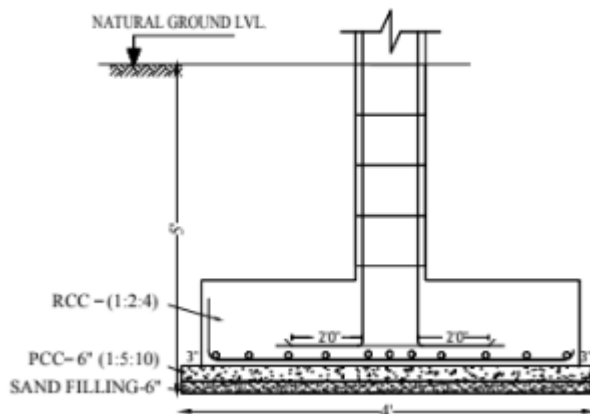
COLUMN DETAIL



Typical footing details for column

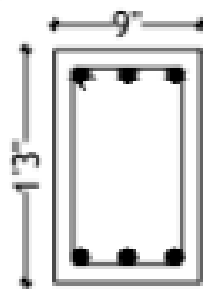


Typical footing details for column



PLINTH BEAM DETAIL

(PB - 1'3"x9") @ midspan

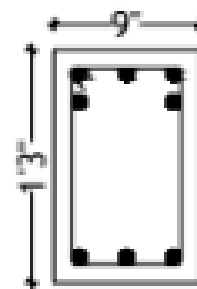


3- 10mm dia bars

3- 12mm dia bars

6mm rings @ 8" c/c

(PB - 1'3"x9") @ support



2- 10mm dia bars
+ 2- 12mm dia bars

3- 12mm dia bars

6mm rings @ 8" c/c

SCHEDULE FOR FOUNDATION REINFORCEMENT DETAIL

Note: All Concrete should be M25 grade with Minimum Cement content 350kg/m³

FOUNDATION	FOOTING SIZE L X B X D	FOOTING DEPTH D	BOTTOM REINFORCEMENT (A)	TOP REINFORCEMENT (B)
F1 - 1'3" x 1'	5' x 5' x 6'	1'6"	12mm dia @ 6" c/c both ways	10mm dia @ 6" c/c both ways

SCHEDULE FOR ROOF SLAB

ONE WAY SLAB - 1

MAIN BAR - 10 MM # @ 6" C/C

DISTRIBUTION - 8 MM # @ 6" C/C

THICKNESS - 5'